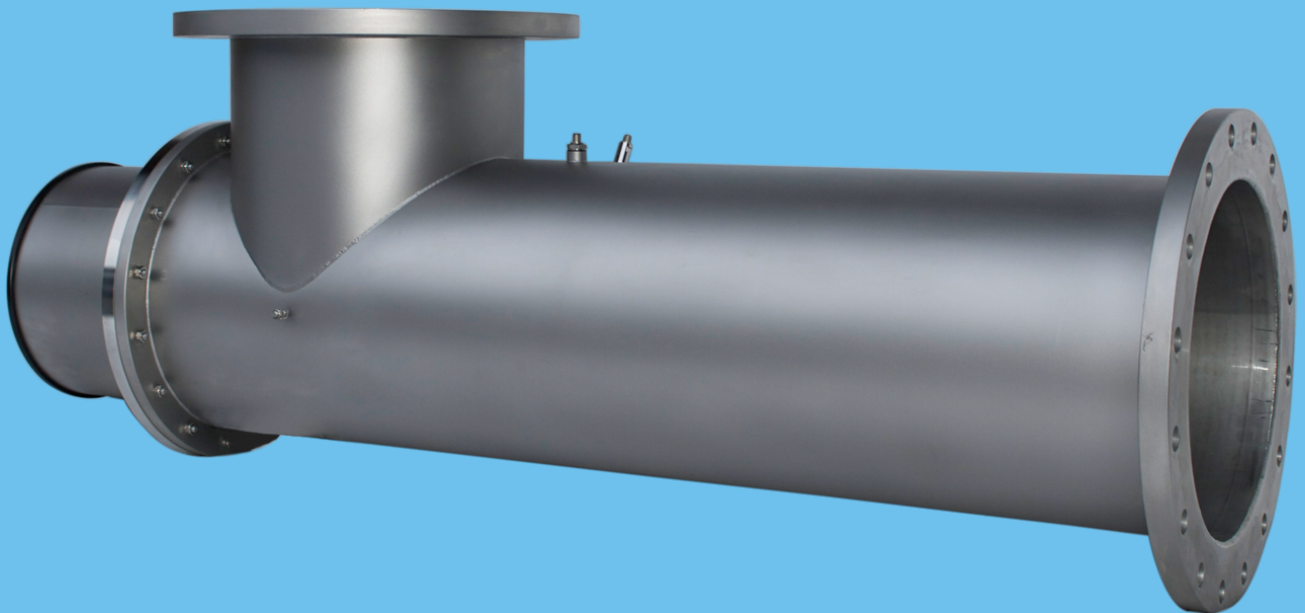


BetaLine type BME1.130

biodosimetric type approved capacities



BetaLine-Eco BME1.130 acc to Önorm, SVGW, NIPH

BetaLine-Eco, BME1.130 certified		Type A	Type C	Type F
Power consumption (kWh)		0,1	0,14	0,2
Level of power (%)		50%	50-70%	50-100%
Minimum UVT100mm		43%	13%	6,4%
UVT10mm	UVT100mm	capacity in l/h		
100,0%	100,0%	2.890	6.130	8.750
98,0%	82,0%	2.890	6.130	8.750
97,8%	80,0%	2.890	6.130	8.750
97,7%	79,0%	2.870	6.080	8.690
97,5%	78,0%	2.850	6.040	8.630
97,3%	76,0%	2.810	5.950	8.510
97,0%	74,0%	2.770	5.870	8.380
96,8%	72,0%	2.720	5.780	8.260
96,5%	70,0%	2.680	5.690	8.130
96,2%	68,0%	2.640	5.600	8.000
95,9%	66,0%	2.600	5.510	7.860
95,6%	64,0%	2.550	5.410	7.730
95,3%	62,0%	2.510	5.320	7.590
95,0%	60,0%	2.460	5.220	7.460
94,9%	59,0%	2.440	5.170	7.390
94,7%	58,0%	2.410	5.120	7.320
94,5%	57,0%	2.390	5.070	7.240
94,4%	56,0%	2.370	5.020	7.170
94,2%	55,0%	2.340	4.970	7.100
94,0%	54,0%	2.320	4.920	7.030
93,8%	53,0%	2.290	4.870	6.950
93,7%	52,0%	2.270	4.810	6.880
93,5%	51,0%	2.240	4.760	6.800
93,3%	50,0%	2.220	4.710	6.730
93,1%	49,0%	2.190	4.650	6.650
92,9%	48,0%	2.170	4.600	6.570
92,7%	47,0%	2.140	4.550	6.490
92,5%	46,0%	2.120	4.490	6.410
92,3%	45,0%	2.090	4.430	6.330
92,1%	44,0%	2.060	4.380	6.250
91,9%	43,0%	2.040	4.320	6.170
91,7%	42,0%	-	4.260	6.090
91,5%	41,0%	-	4.200	6.000
91,2%	40,0%	-	4.140	5.920
91,0%	39,0%	-	4.080	5.830
90,8%	38,0%	-	4.020	5.750
90,5%	37,0%	-	3.960	5.660
90,3%	36,0%	-	3.900	5.570

BetaLine-Eco, BME1.130 certified		Type A	Type C	Type F
Power consumption (kWh)		0,1	0,14	0,2
Level of power (%)		50%	50%-70%	50-100%
Minimum UVT100mm		43%	13%	6,4%
UVT10mm	UVT100mm	capacity in l/h		
90,0%	35,0%	-	3.830	5.480
89,8%	34,0%	-	3.770	5.390
89,5%	33,0%	-	3.700	5.290
89,2%	32,0%	-	3.640	5.200
88,9%	31,0%	-	3.570	5.100
88,7%	30,0%	-	3.500	5.000
88,4%	29,0%	-	3.430	4.900
88,0%	28,0%	-	3.360	4.800
87,7%	27,0%	-	3.290	4.700
87,4%	26,0%	-	3.220	4.590
87,1%	25,0%	-	3.140	4.490
86,7%	24,0%	-	3.060	4.380
86,3%	23,0%	-	2.990	4.270
85,9%	22,0%	-	2.910	4.150
85,6%	21,0%	-	2.830	4.040
85,1%	20,0%	-	2.740	3.920
84,7%	19,0%	-	2.660	3.790
84,2%	18,0%	-	2.570	3.670
83,8%	17,0%	-	2.480	3.540
83,3%	16,0%	-	2.380	3.410
82,7%	15,0%	-	2.290	3.270
82,2%	14,0%	-	2.190	3.130
81,5%	13,0%	-	2.090	2.980
80,9%	12,0%	-	-	2.830
80,2%	11,0%	-	-	2.670
79,4%	10,0%	-	-	2.500
78,6%	9,0%	-	-	2.330
77,7%	8,0%	-	-	2.140
76,6%	7,0%	-	-	1.940
75,5%	6,4%	-	-	1.820
74,1%	5,0%	-	-	-
72,5%	4,0%	-	-	-
70,4%	3,0%	-	-	-